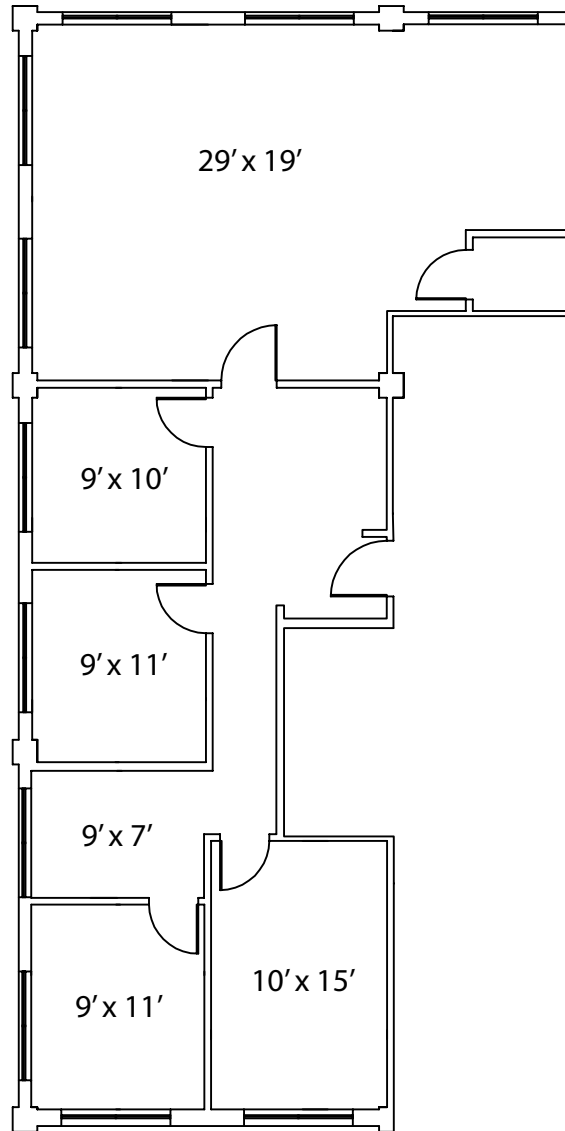
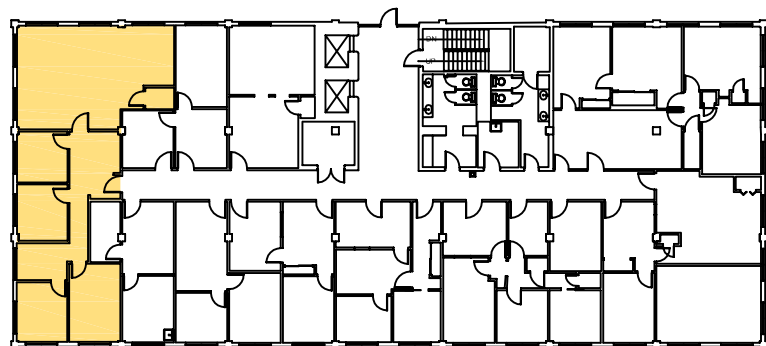


1,653 SF



**J T** John Toomey & Company, Inc.  
Real Estate

Jill Meeks  
PO Box 160585  
Mobile, AL 36616  
Phone: 251.342.7229  
Fax: 251.344.0547  
jmeeks@johntoomeycompany.com  
www.LeaseMobileBay.com

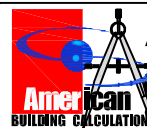


Any information given hereon is obtained from sources considered reliable. Broker and Owner are not responsible for misstatements of facts, errors or omissions. The information supplied hereon is for informational purposes only and shall not contain a warranty or assurance that information is correct.

## FLOOR PLAN



SUITE 215  
MOBILE OFFICE PARK ONE  
273 AZALEA RD  
MOBILE, AL. 36609



Prepared by:  
American Building Calculations  
2209 Collier Parkway, Suite 118  
Land O Lakes, FL. 34639  
Phone: 813.600.5472  
<http://www.abcalc.biz>