

# Office Space For Lease

## Mobile Office Park

273 Azalea Road  
Mobile, Alabama 36609

For more information  
please contact:

Jill Meeks / Dan Graney  
John Toomey & Company, Inc.  
Phone: (251) 342-7229  
Fax: (251) 344-0547  
jmeeks@johntoomeycompany.com  
dgraney@johntoomeycompany.com

[www.LeaseMobileBay.com](http://www.LeaseMobileBay.com)

Available Office Space  
Up to 8,698 sf contiguous  
Divisible & Customizable


Floorplans on Website

Possession  
Immediate possession on  
most suites

Term  
Negotiable

Location  
Located at the intersection  
of Airport Blvd. and Azalea Rd.

Conveniently located in the  
heart of West Mobile.

Easy access to 

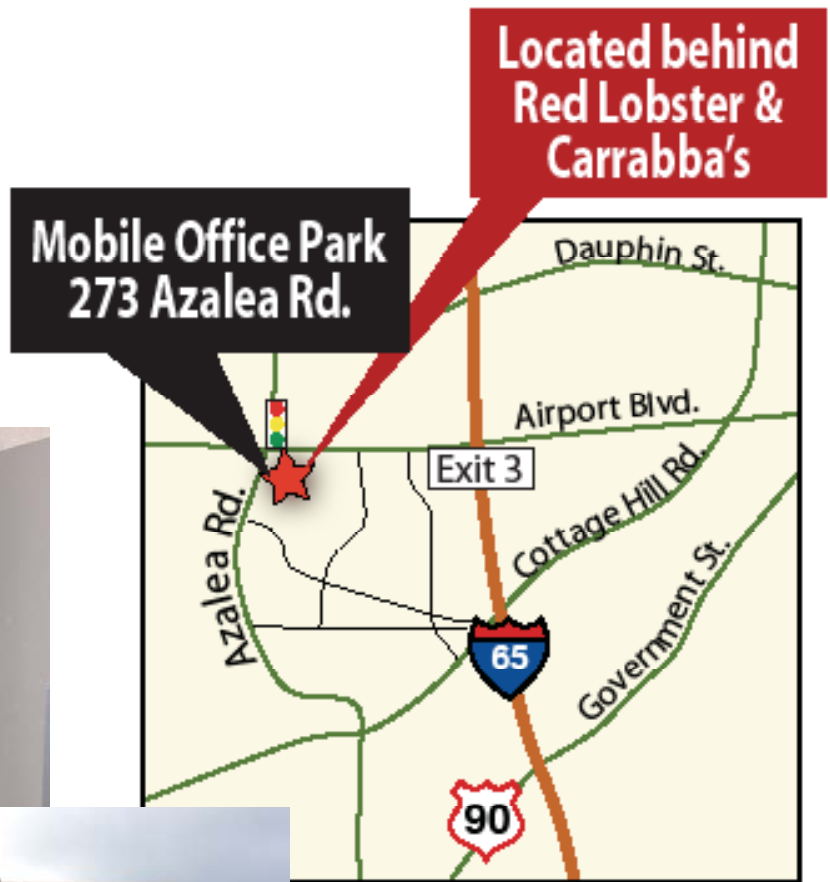




[www.LeaseMobileBay.com](http://www.LeaseMobileBay.com)

## Mobile Office Park

273 Azalea Road  
Mobile, Alabama 36609



# Mobile Office Park Floorplans

Please contact:

Jill Meeks / Dan Graney

John Toomey & Company, Inc.

Phone: (251) 342-7229

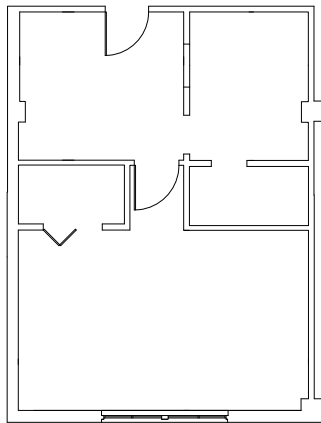
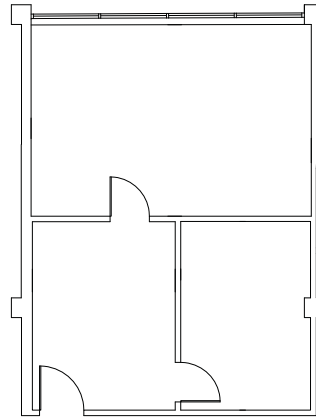
Fax: (251) 344-0547

[jmeeks@johntoomeycompany.com](mailto:jmeeks@johntoomeycompany.com)

[dgraney@johntoomeycompany.com](mailto:dgraney@johntoomeycompany.com)

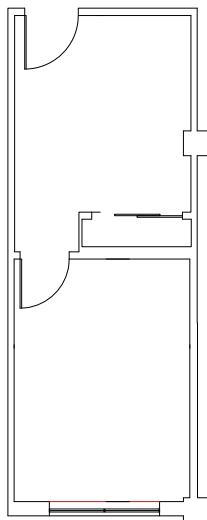
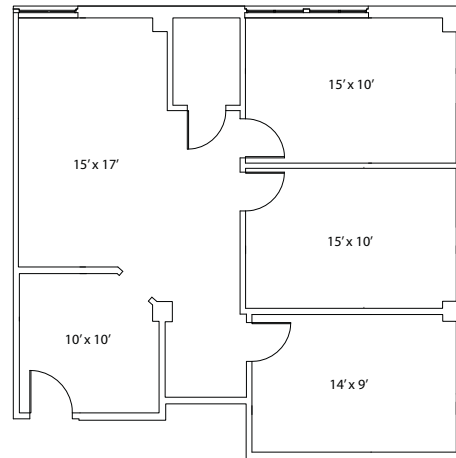


Bldg I  
Suite 100  
640 sf

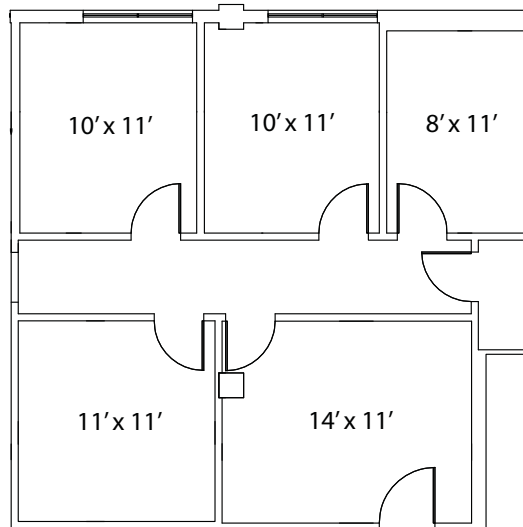


Bldg 3  
Suite 306  
694 sf

Bldg 3  
Suite 101  
1,060 sf



Bldg 2  
Suite 208  
332 sf



Bldg I  
Suite 417  
1,058 sf

# Mobile Office Park Floorplans

Please contact:

Jill Meeks / Dan Graney

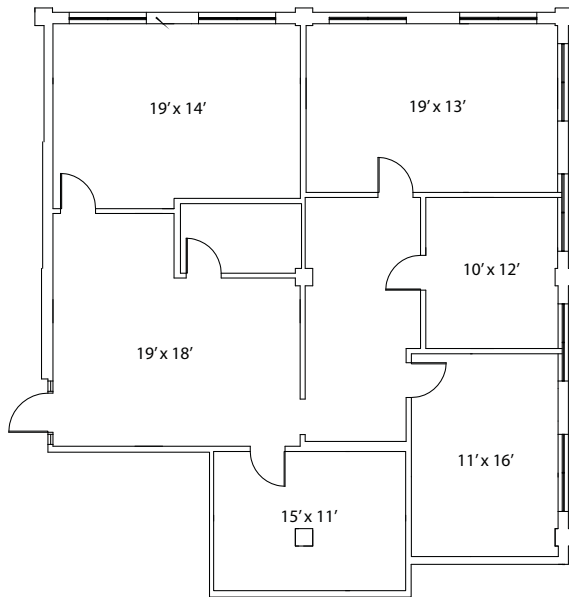
John Toomey & Company, Inc.

Phone: (251) 342-7229

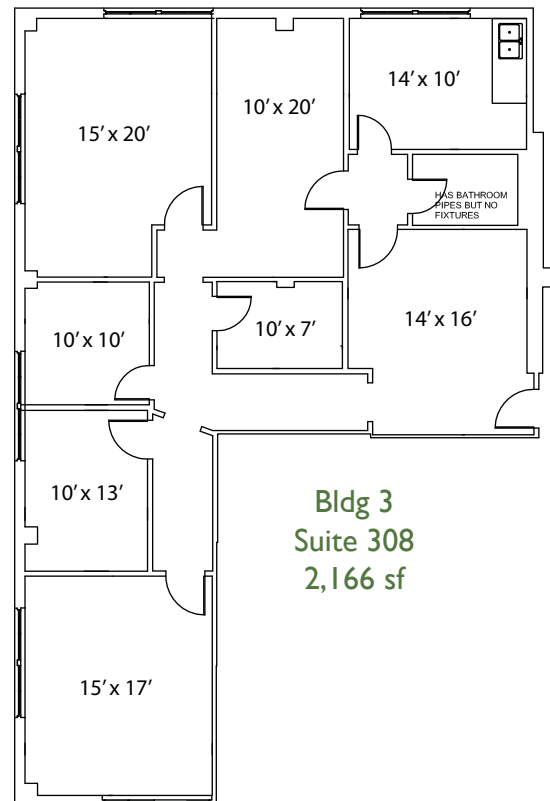
Fax: (251) 344-0547

[jmeeks@johntoomeycompany.com](mailto:jmeeks@johntoomeycompany.com)

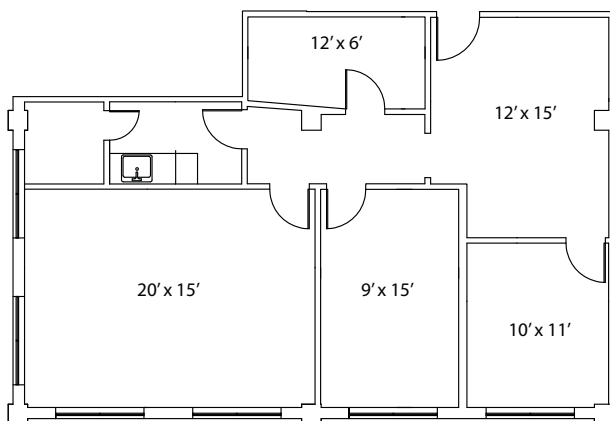
[dgraney@johntoomeycompany.com](mailto:dgraney@johntoomeycompany.com)



**Bldg 1  
Suite 300  
1,970 sf**



**Bldg 3  
Suite 308  
2,166 sf**



**Bldg 2  
Suite 414  
1,280 sf**

# Mobile Office Park Floorplans

Please contact:

Jill Meeks / Dan Graney

John Toomey & Company, Inc.

Phone: (251) 342-7229

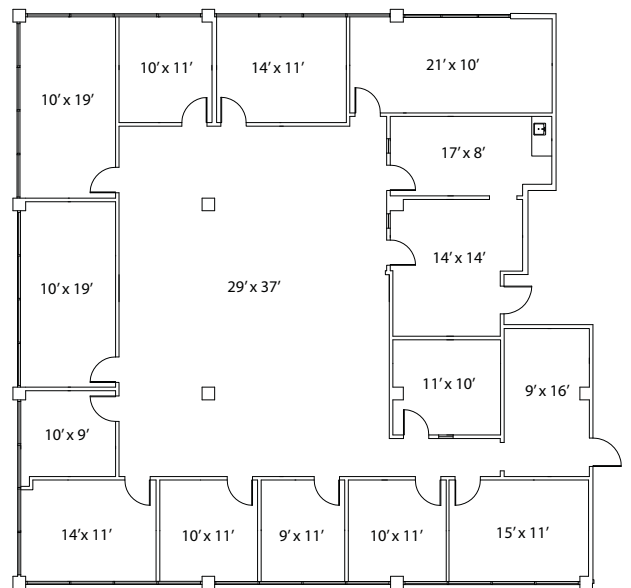
Fax: (251) 344-0547

[jmeeks@johntoomeycompany.com](mailto:jmeeks@johntoomeycompany.com)

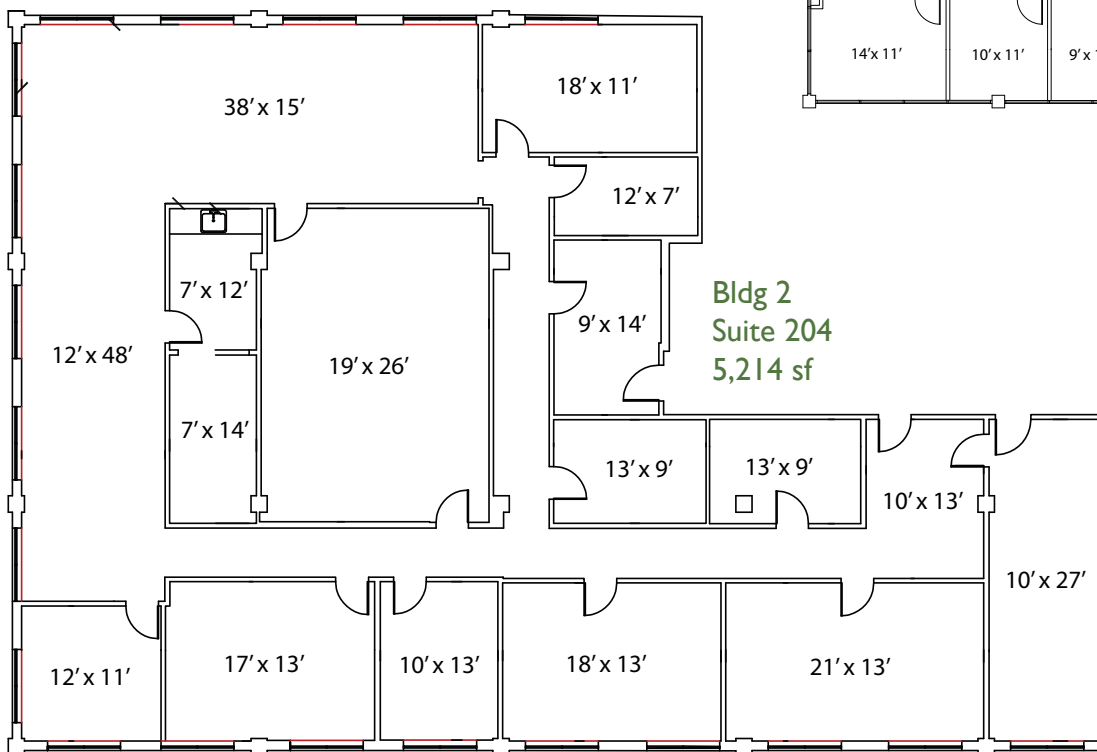
[dgraney@johntoomeycompany.com](mailto:dgraney@johntoomeycompany.com)



**Bldg 2  
Suite 104  
4,023 sf**



**Bldg 2  
Suite 204  
5,214 sf**



# Mobile Office Park Floorplans

Please contact:

Jill Meeks / Dan Graney

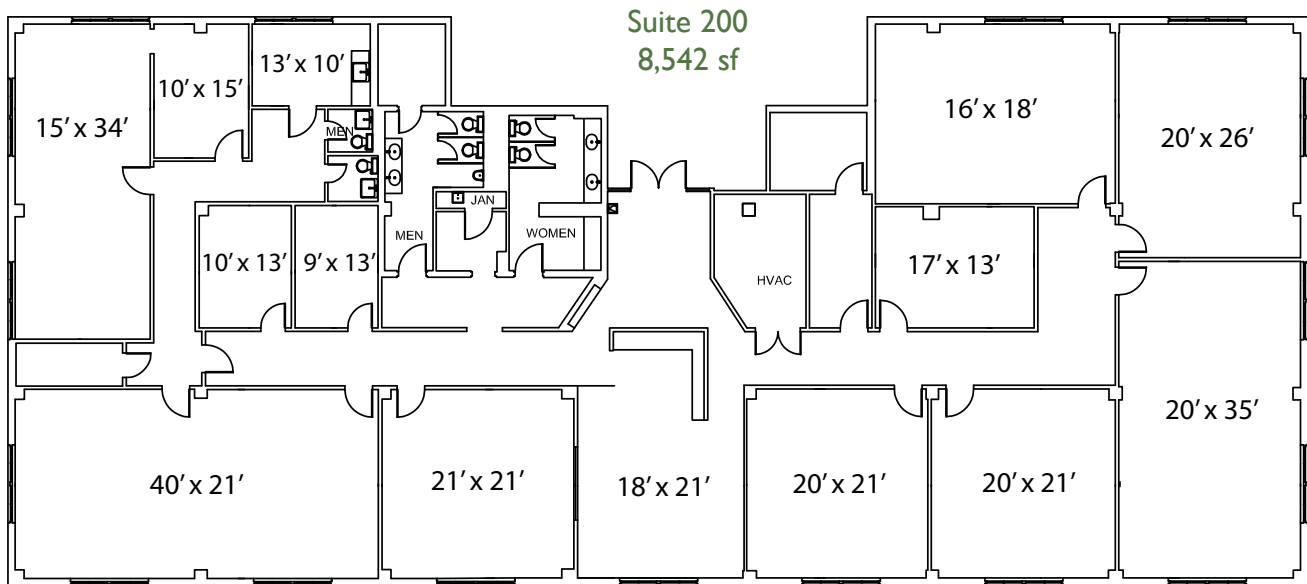
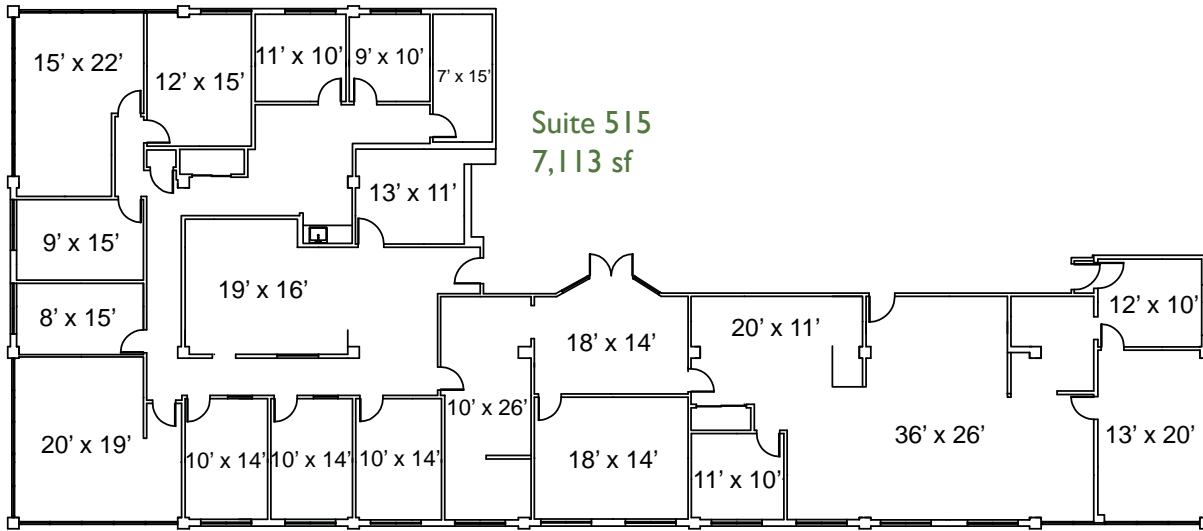
John Toomey & Company, Inc.

Phone: (251) 342-7229

Fax: (251) 344-0547

jmeeks@johntoomeycompany.com

dgraney@johntoomeycompany.com



No warranty or representation, express or implied, is made as to the accuracy of the information contained herein, and same is submitted subject to errors, omissions, change of price, rental or other conditions, withdrawal without notice, and to any special listing conditions imposed by Owner or Agent.